

Pineapple Bubble Blower Instructions

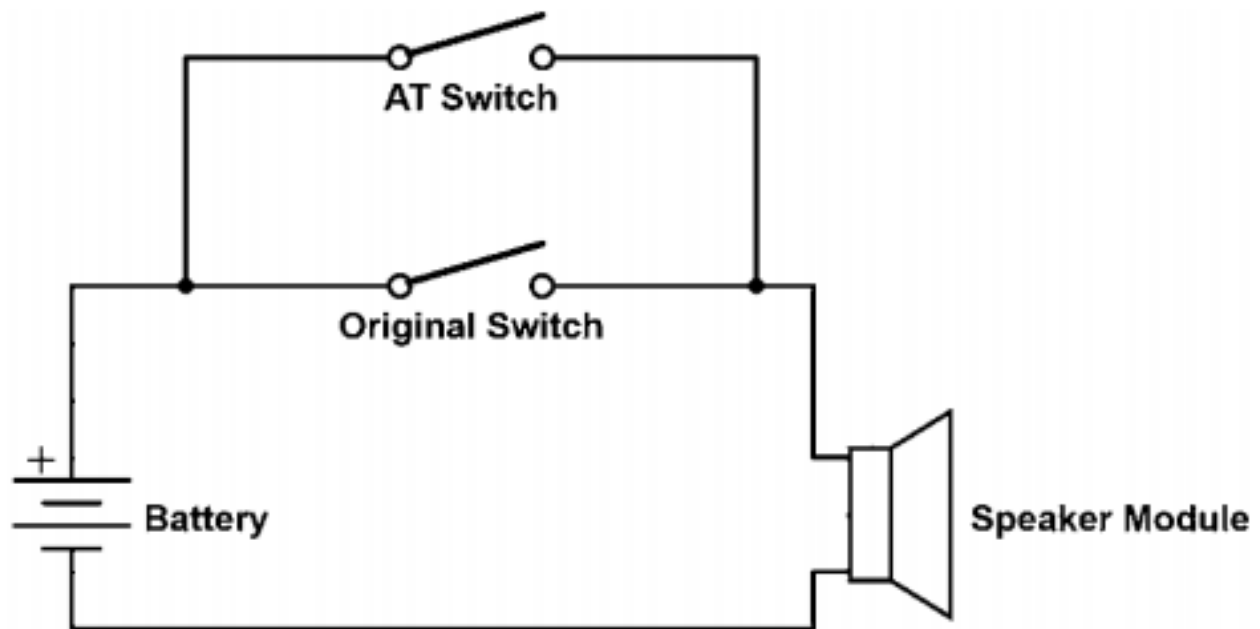
Prepare the Bubble Blower

1. Open the packaging. Be very careful not to damage it, since you will repackage it at the end for its recipient. Carefully remove the tape, then unfold the cardboard from the sides.
2. Cut the zip ties holding the bubble blower to the cardboard. Set the cardboard, with the bubble solution still attached, aside.
3. Loosen the 6 screws holding the sides of the bubble blower together. Set the screws aside. Pull the front apart from the back.

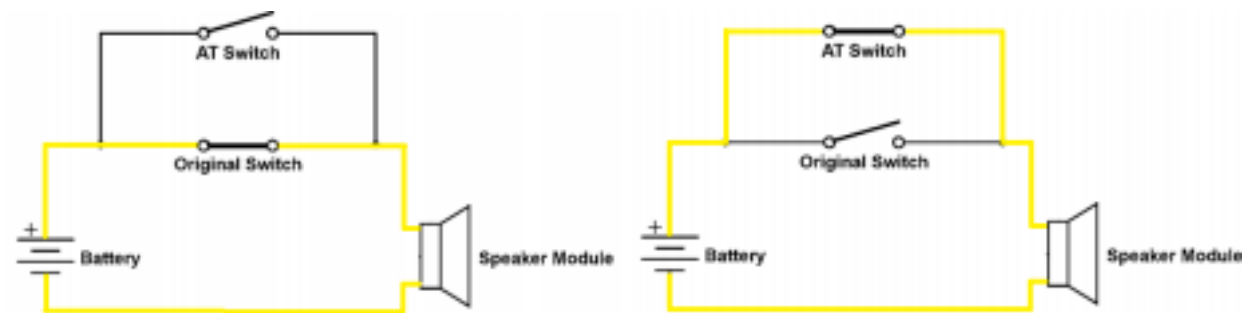


Switch Adaptation

You will attach each wire from the female audio jack to one of the wires that come from the current switch on the pineapple. Our goal is to activate the toy using a new switch, while still allowing the original switch to still work. To accomplish this, we are going to wire our new harness in parallel with the other switch. An electrical schematic of this circuit is depicted below.



Regardless of which switch is pressed, electricity (yellow) can flow through the circuit, causing the toy to activate.



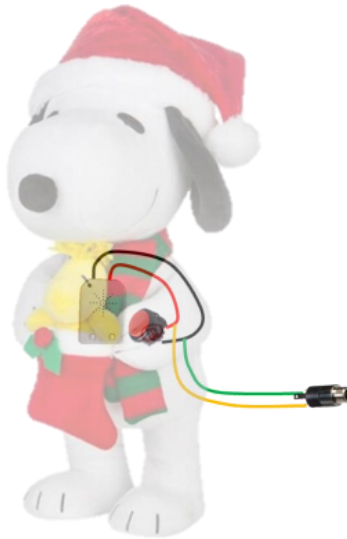
4. String the wires from the female audio jack through the lowest hole in the back vent of the pineapple.

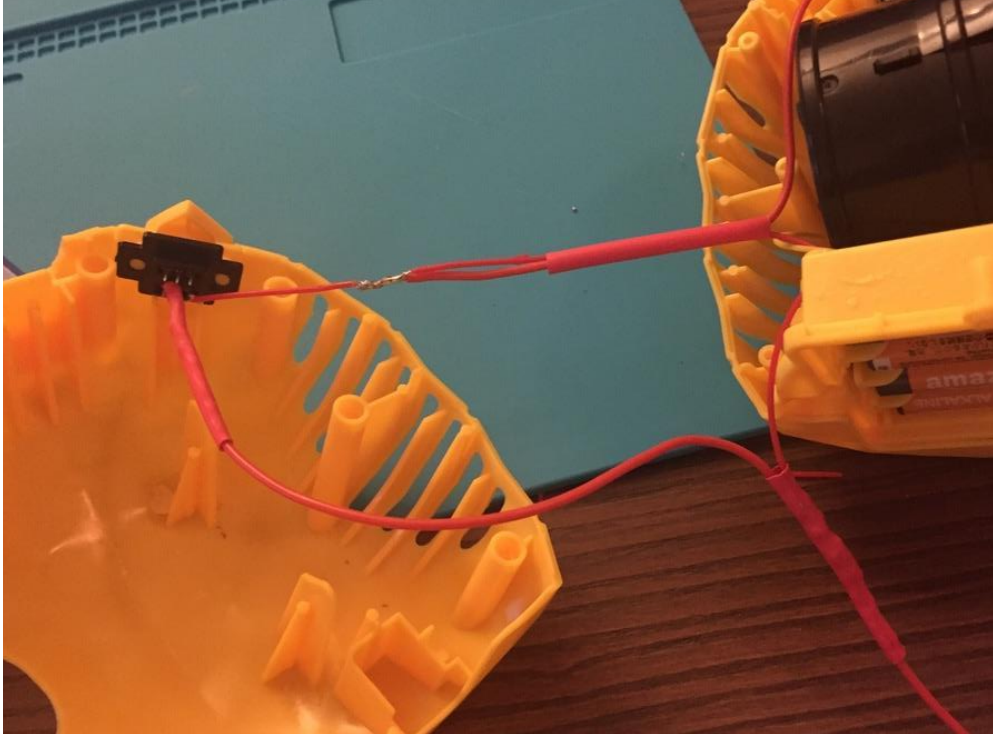


5. Slip a piece of heat shrink on each of the wires.
6. Take one of the wires running to the switch and cut it a few inches away from the switch.
7. Strip both ends ~ 1 cm.
8. Twist these two wires together along with one of the wires from the audio jack harness that was prepared earlier. It does not matter which wire you choose.



9. Solder all three wires together and insulate it using heat shrink. The helping hands will be really...well...helpful to hold all the wires in place as you solder them together. Repeat this for the other wire going to the toy's switch. See the below image for how the wiring of the toy should look.





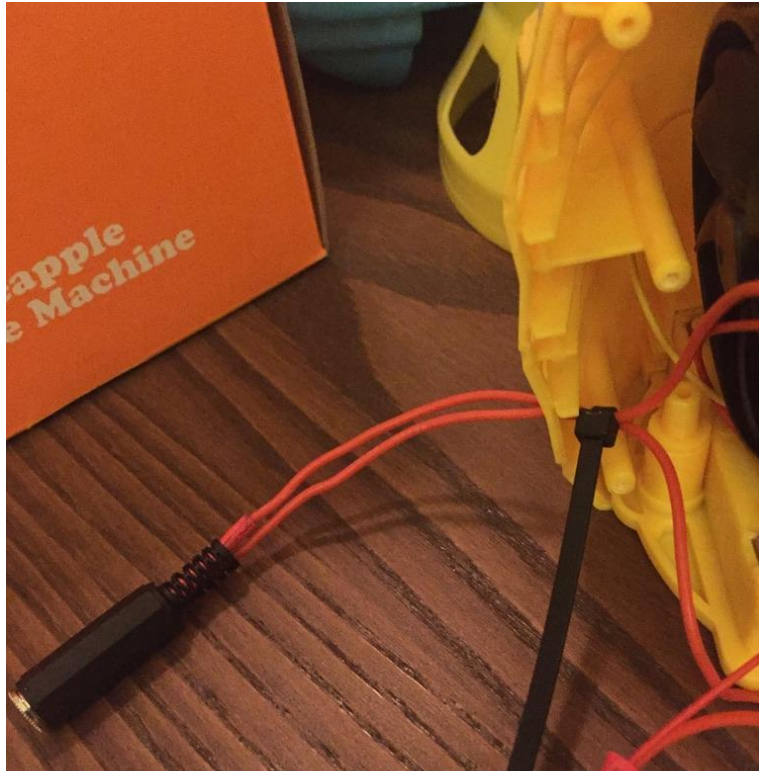
10. To test, simply plug a compatible AT switch (depicted) into the audio jack. Put batteries into the pineapple and test that the original switch and the new button switch both work to turn the bubble blower off and on.



- a. Note: Plugging and unplugging the toy into an AT switch while it is turned on may cause the toy to activate, this is normal.

<https://www.amazon.com/>

11. Pull the wires from the audio jack through the vent until they are about even on the outside of the pineapple. Wrap a zip tie around the two wires on the inside of the vent. This way, if the audio jack gets yanked, the zip ties will stop the wires from pulling on your freshly soldered joints.



12. Put the pineapple back together, while being careful that the wires are not in the way of the fan. You may have to wrap your wires around the fan to accomplish this. Don't forget the green leaves on top! Then, use the screws to fasten the halves together.
13. Put the packaging back together. Don't forget the screws with the black plastic washers that hold the bottom of the pineapple to its packaging. Carefully refold the cardboard as it was and tape it back together.